



125 Years of Orange County

Images from the Orange County Archives

Orange County Clerk-Recorder

Presented at the "OC 125" Birthday Ceremony, 8-1-14, at the OC Fair



AND WE ARE THE PEOPLE!!

Illustration from the *Santa Ana Standard*, 1889

First American Corp.





4th St. and Sycamore Ave., Santa Ana, circa 1930

Disneyland, 1963

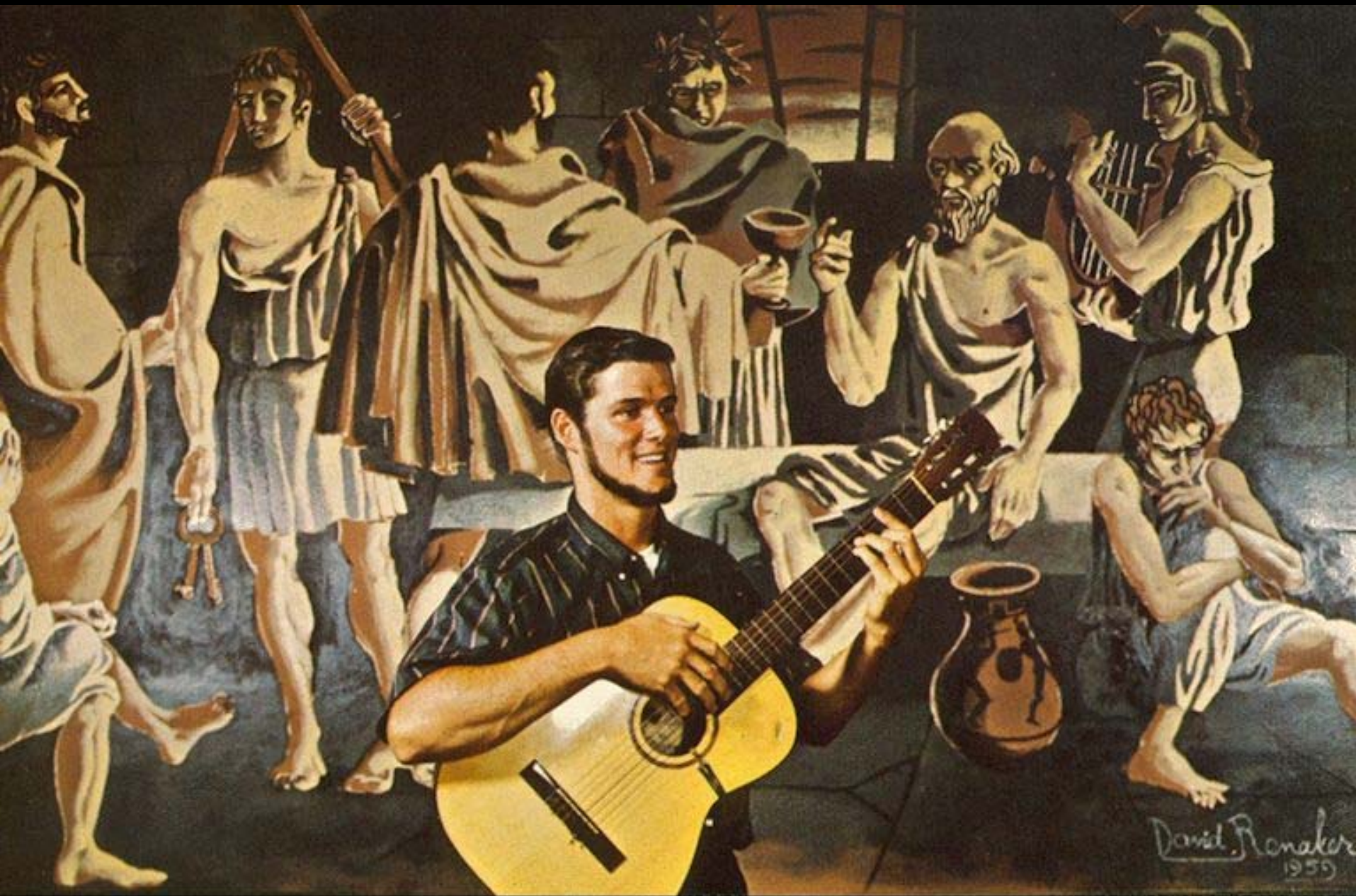


Santa Ana River, Santa Ana Canyon





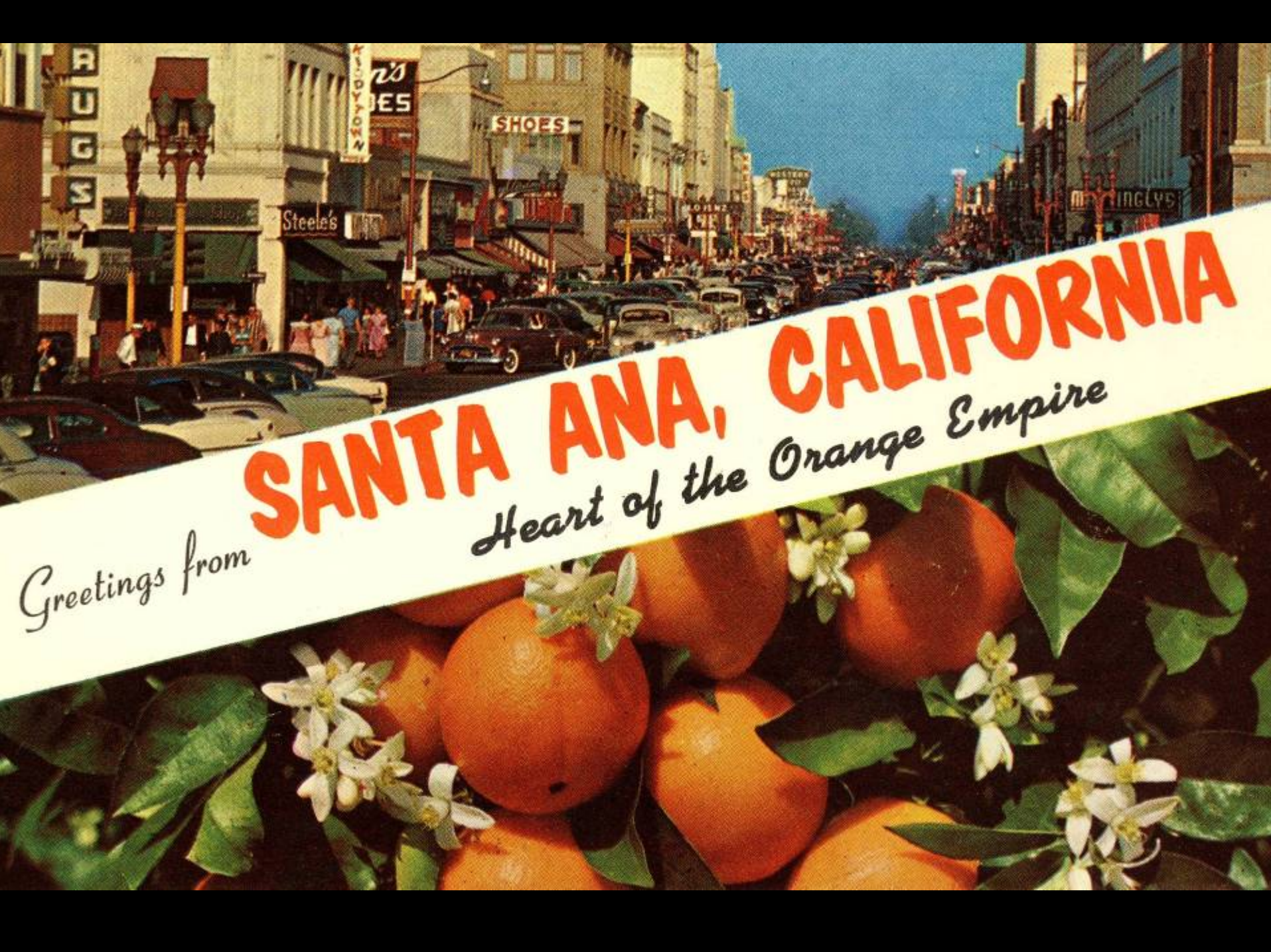
Apricot picking camp, 1890s



Tim Morgan at The Prison of Socrates, Balboa, ca. 1962



Citrus, Hewes Ranch, Orange, circa 1920s



SANTA ANA, CALIFORNIA

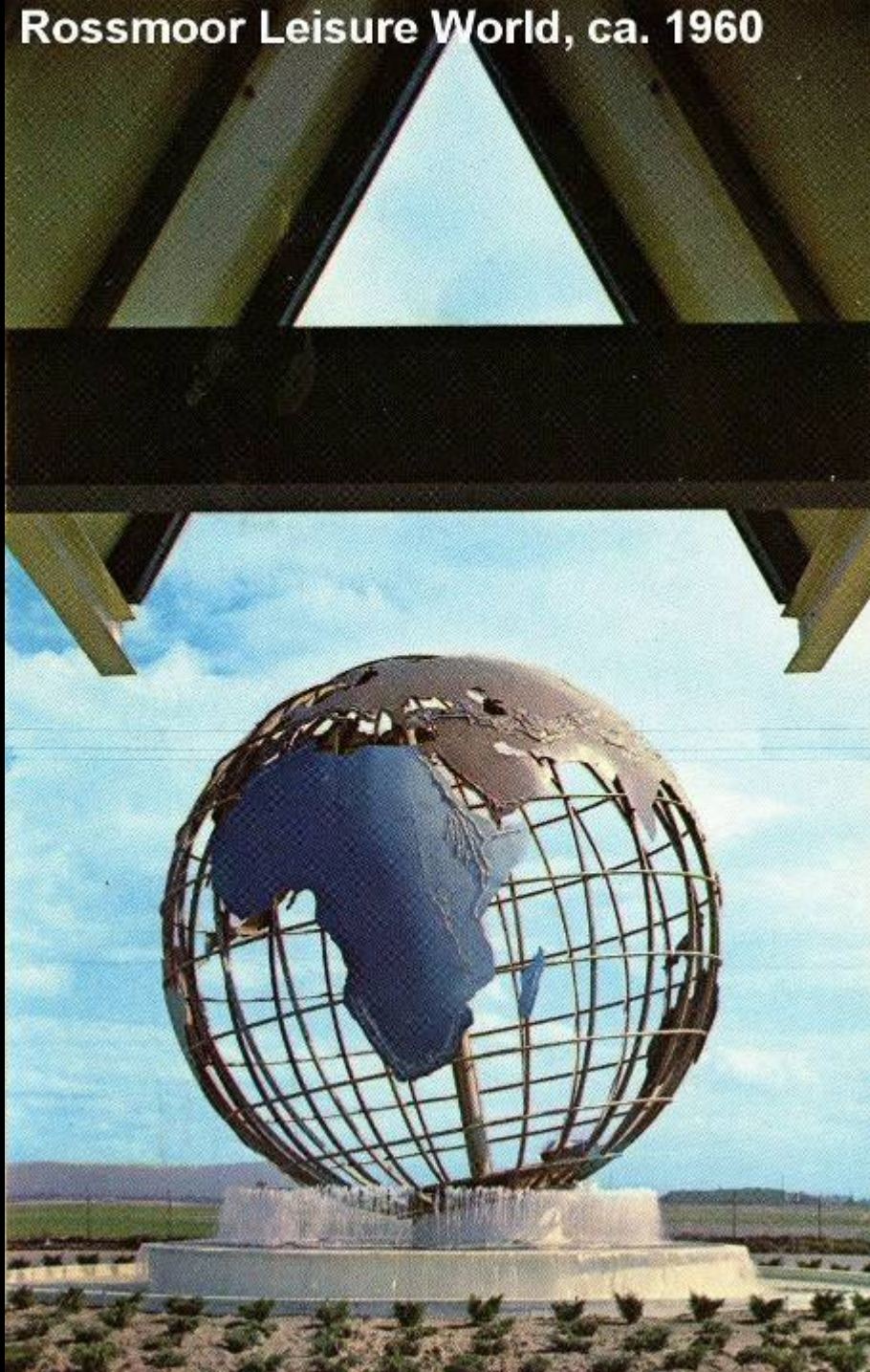
Heart of the Orange Empire

Greetings from

Celery fields near Westminster, ca. 1905

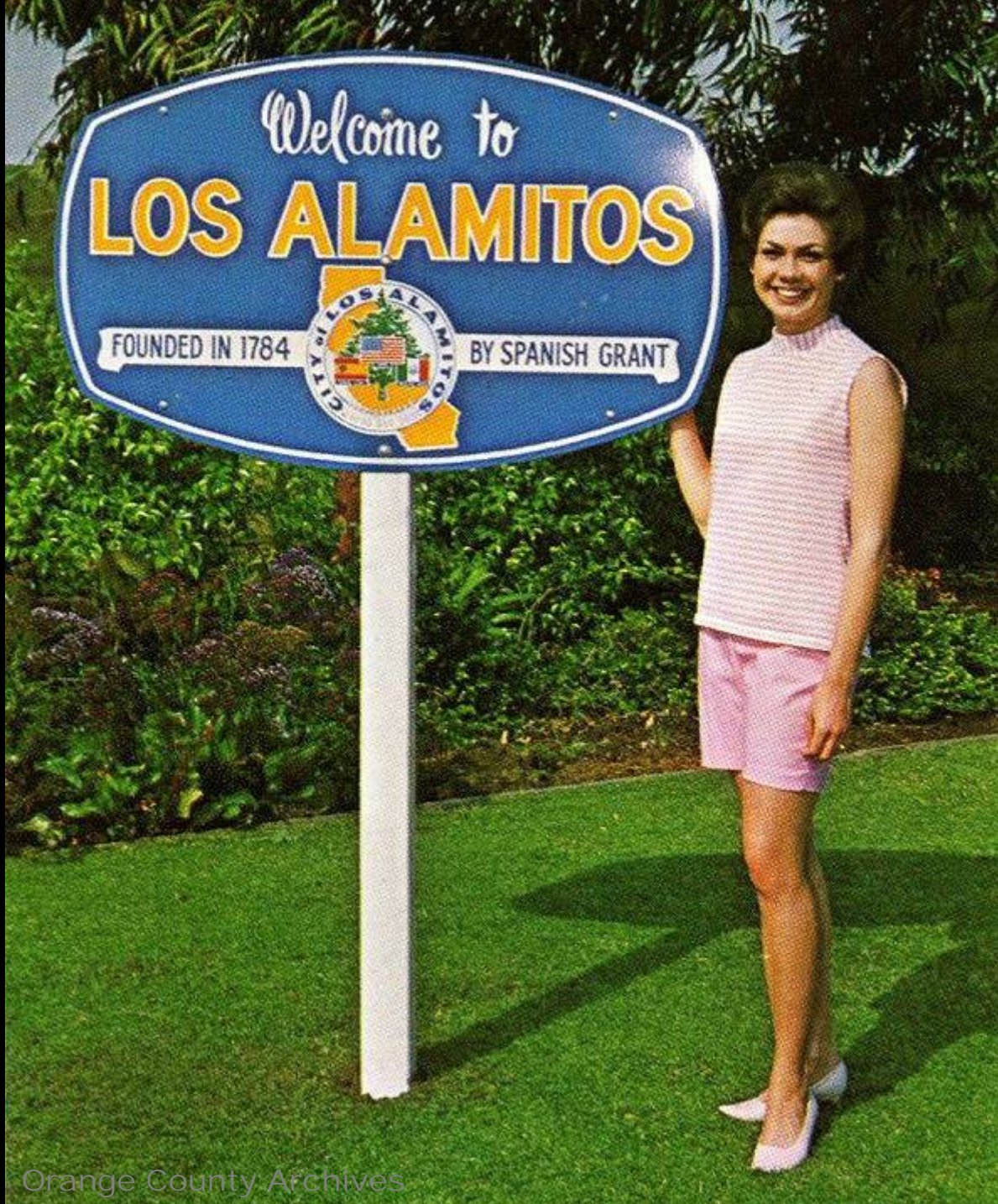


Rossmoor Leisure World, ca. 1960





La Habra, Sept. 16, ca 1920s



Welcome to
LOS ALAMITOS

FOUNDED IN 1784



BY SPANISH GRANT



Dana Point 1927

Marine Corps Air Station, El Toro, 1940s



Mutual Orange Distributors display, Orange County Fair, 1949



Orange Coast College, Costa Mesa, ca 1960





Camp Bonita, Irvine Ranch, 1937



University of California, Irvine, 1966

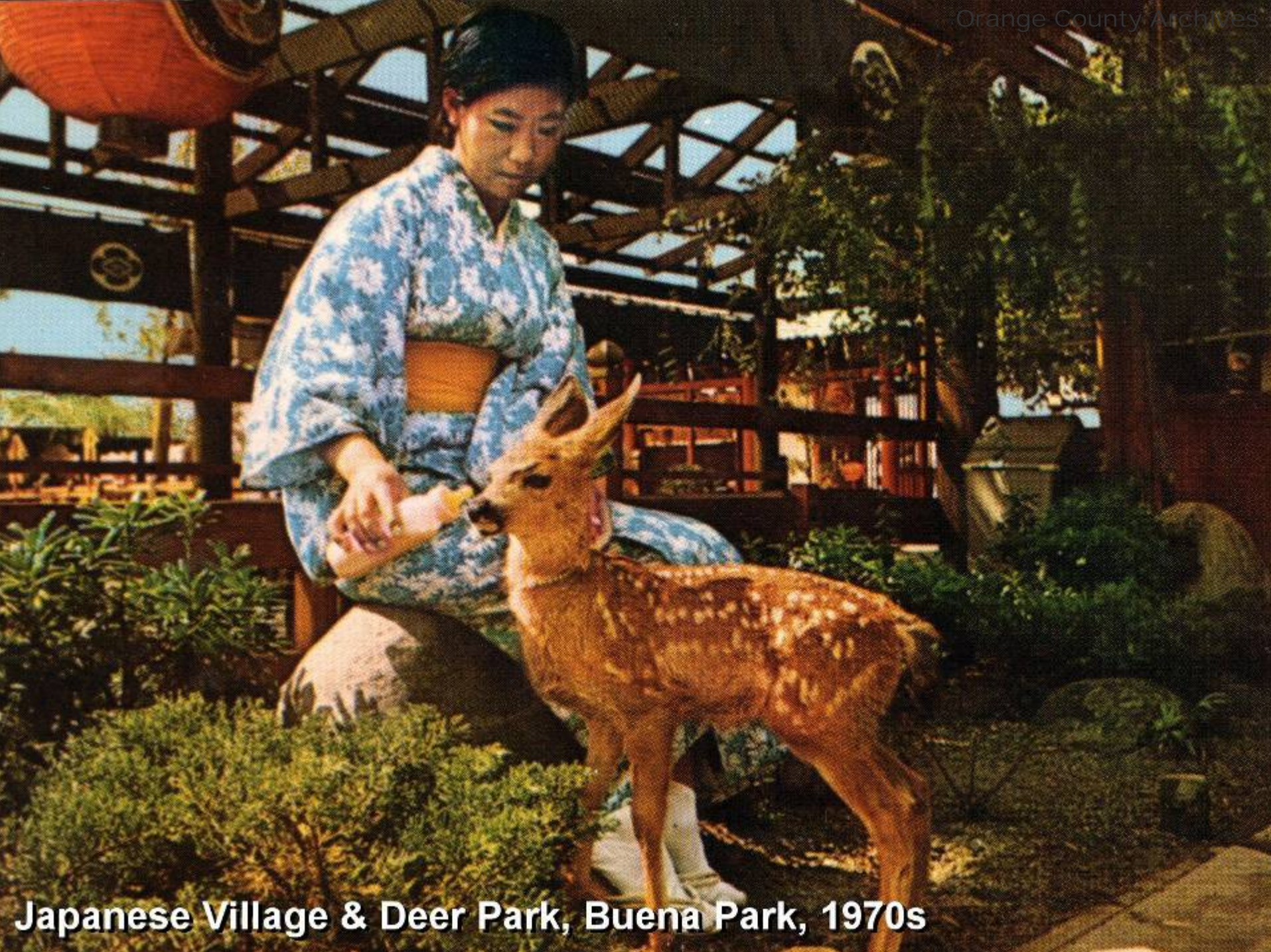
Eddie Martin and his plane, 1921





NEAREST TO ALL THE FUN IN SOUTHERN CALIFORNIA
THE CENTER OF AMERICA'S YEAR-ROUND VACATION LAND





Japanese Village & Deer Park, Buena Park, 1970s

Laguna Beach, circa 1910



Lion Country Safari, 1971

Orange County Archives



The Plaza, Orange, 1892

Orange County Archives





Modjeska Statue, Pearson Park, Anaheim, 1950s



Promenade Seal Beach Cal.



You're closer home

Laguna Niguel

MISSION VIEJO

NEW! ALISO VILLAS

FROM \$17,700

LAKESIDE PARK

NEW 36 acre HOMES FROM \$21,000

LEFT ON EL TORO RD

LEFT ON EL TORO / 1/2 m

SAN DIEGO

EL TORO GARAGE

MISSION VIEJO
NEW MADRID
30,500

Cristarano
\$15,900

World

21,900



Orange, 1946

The Nixons in Tomorrowland





Santa Ana, circa 1910

Orange County, ca 1967





First County offices, E. 4th St., Santa Ana, 1890





Drying Apricots Santa Ana Cal. 1904

LA PALMA CIVIC CENTER

FOR THE

ORANGE COUNTY LA PALMA CIVIC CENTER AUTHORITY

COUNTY SUPERVISORS

| | |
|-----------------|-----------------------|
| C. M. FEATHERLY | 1 ST DIST. |
| DAVID L. BAKER | 2 ND DIST. |
| WM. J. PHILLIPS | 3 RD DIST. |
| WM. H. HIRSTEIN | 4 TH DIST. |
| ALTON E. ALLEN | 5 TH DIST. |

COUNCIL

| | |
|--------------|-------------------|
| JAKE J. WEST | MAYOR |
| PAUL C. FU | MAYOR PRO TEMPORE |
| JOHN A. B | COUNCILMAN |
| PETER G. B | COUNCILMAN |
| JEROME A. | COUNCILMAN |

AUTHORITY BOARD

| | |
|---------------------|----------|
| HENRY R. FRESE | CHAIRMAN |
| JACK ABRAHAMSON | |
| ROBERT P. STAHOVICH | |
| COR VANDER DUSSEN | |
| WINFIELD WESTFALL | |



TOM AND TRUSKIER

RICHARD LAYNE TOM A. I. A.
16897 ALGONQUIN ST. HUNTINGTON

J. A. ARCHITECTS

JAN. W. TRUSKIER A. I. A.
HUNTINGTON BEACH (714) 846-0671

ENGINEERS

| | |
|------------------------|--------------|
| SCHERRER & BAUMANN | · STRUCTURAL |
| LEE ISHII & ASSOCIATES | · ELECTRICAL |
| KENNETH AMBROSE | · MECHANICAL |

GENERAL CONTRACTOR

CROSBY CONSTR. CO.
714 5409444



Orange County Archives

Birch Park, Santa Ana, 1910



Blue Light Mine, Silverado Canyon

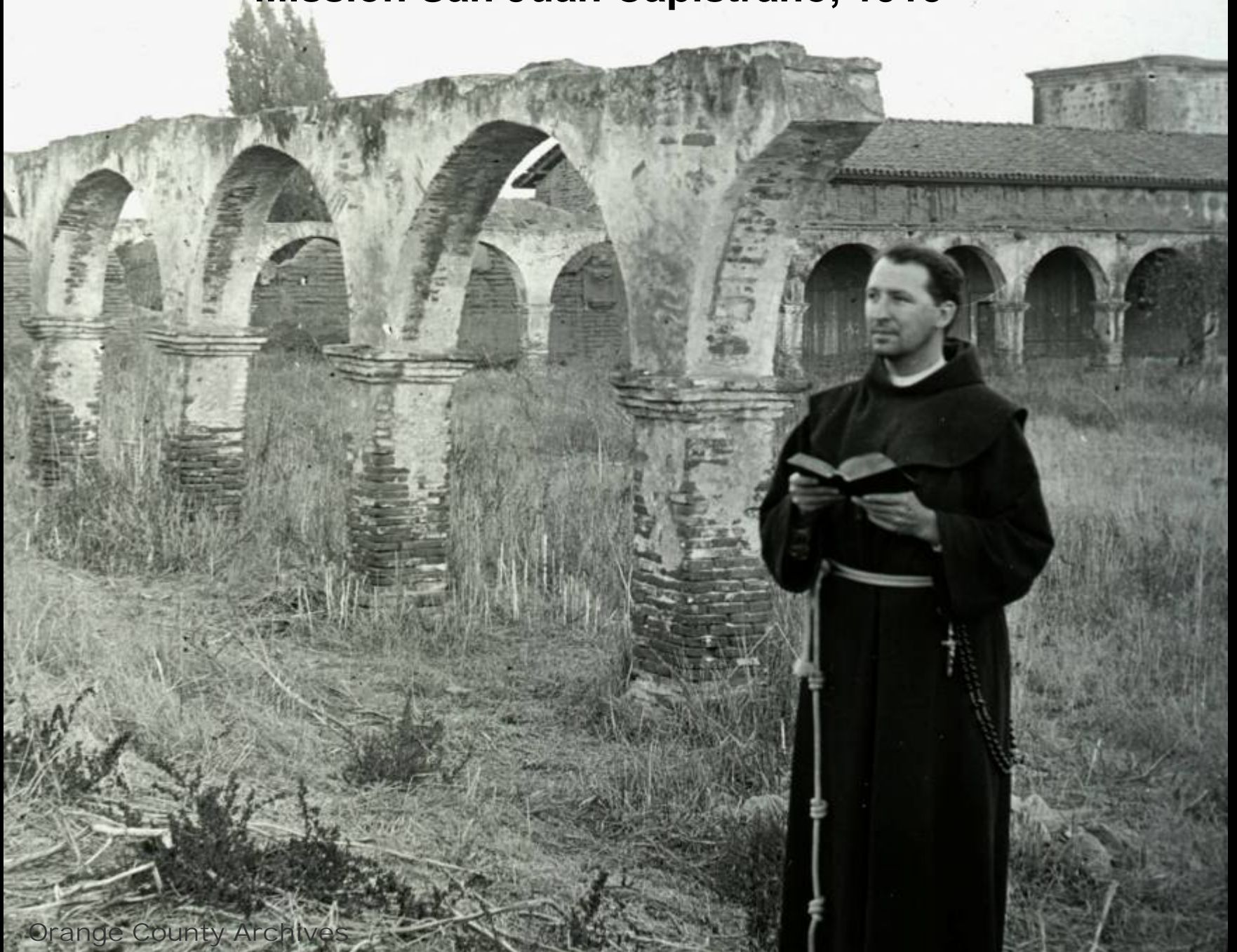


San Clemente Pier, circa 1950s



OIL FIELDS,
BREA CAL.

Mission San Juan Capistrano, 1915



Drying chili peppers near Talbert, circa 1910s





Orange County Archives

View from the Newport Beach Pier, 1950s

Coast Highway dedication with Mary Pickford, 1926





Co. E, 9th Regiment, N. G. C.

Orange County Archives

Co. E, 9th Regiment, Calif. National Guard, Santa Ana, 1890



Supervisor Featherly & Walt Disney, 1965



Diamond School, South Santa Ana, 1890s

Downtown Orange, circa 1907





Street Scene after Earthquake
Santa Ana, Mar. 10, 1933

30

Earthquake of 1933, Santa Ana



EIGHTEENTH ANNUAL
FESTIVAL OF ARTS
and PAGEANT of the MASTERS
JULY 18 THRU AUGUST 9
LAGUNA BEACH, CALIFORNIA
SOUVENIR PROGRAM 50 CENTS



4th St., Santa Ana, 1890

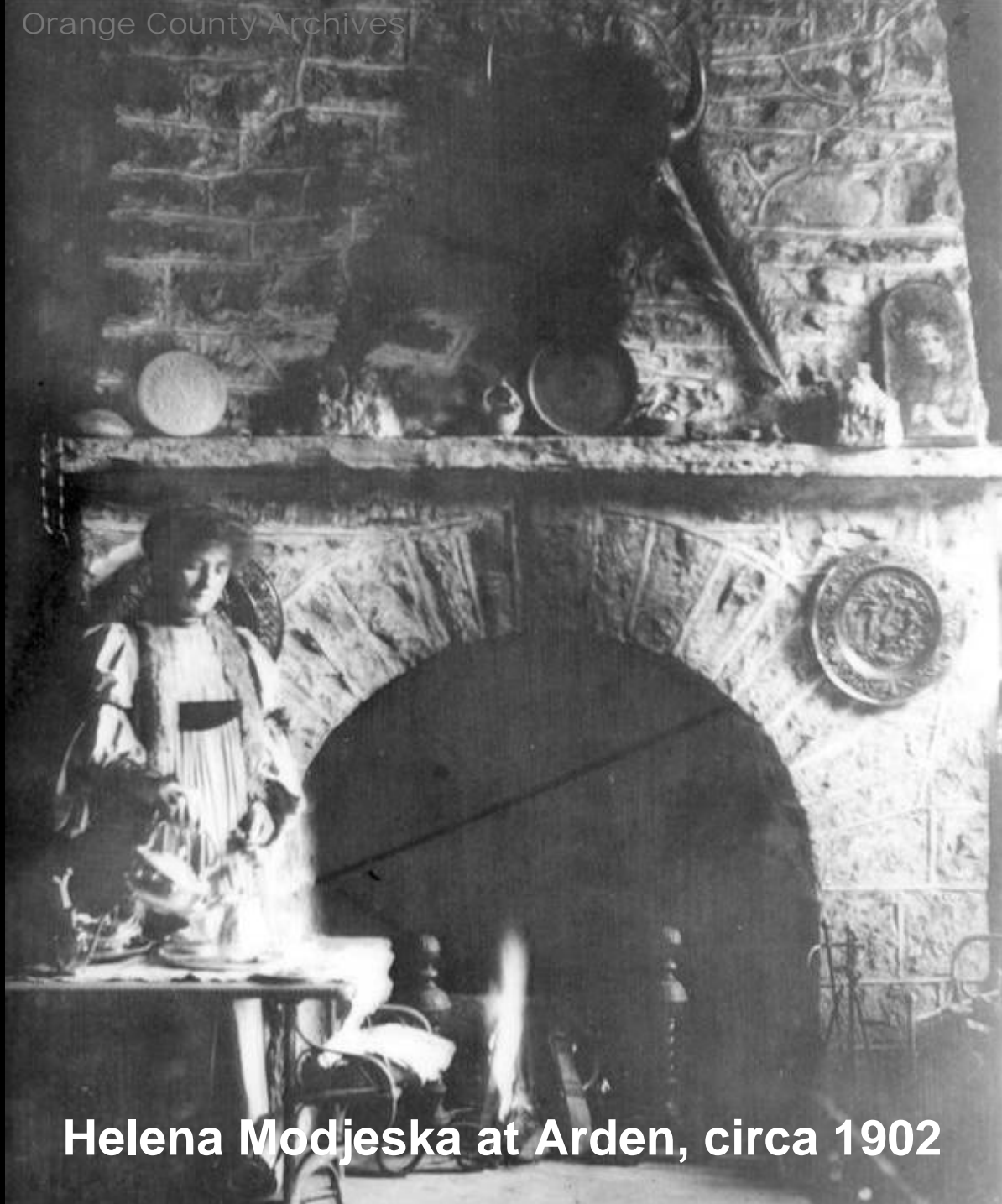


Orange County Archives

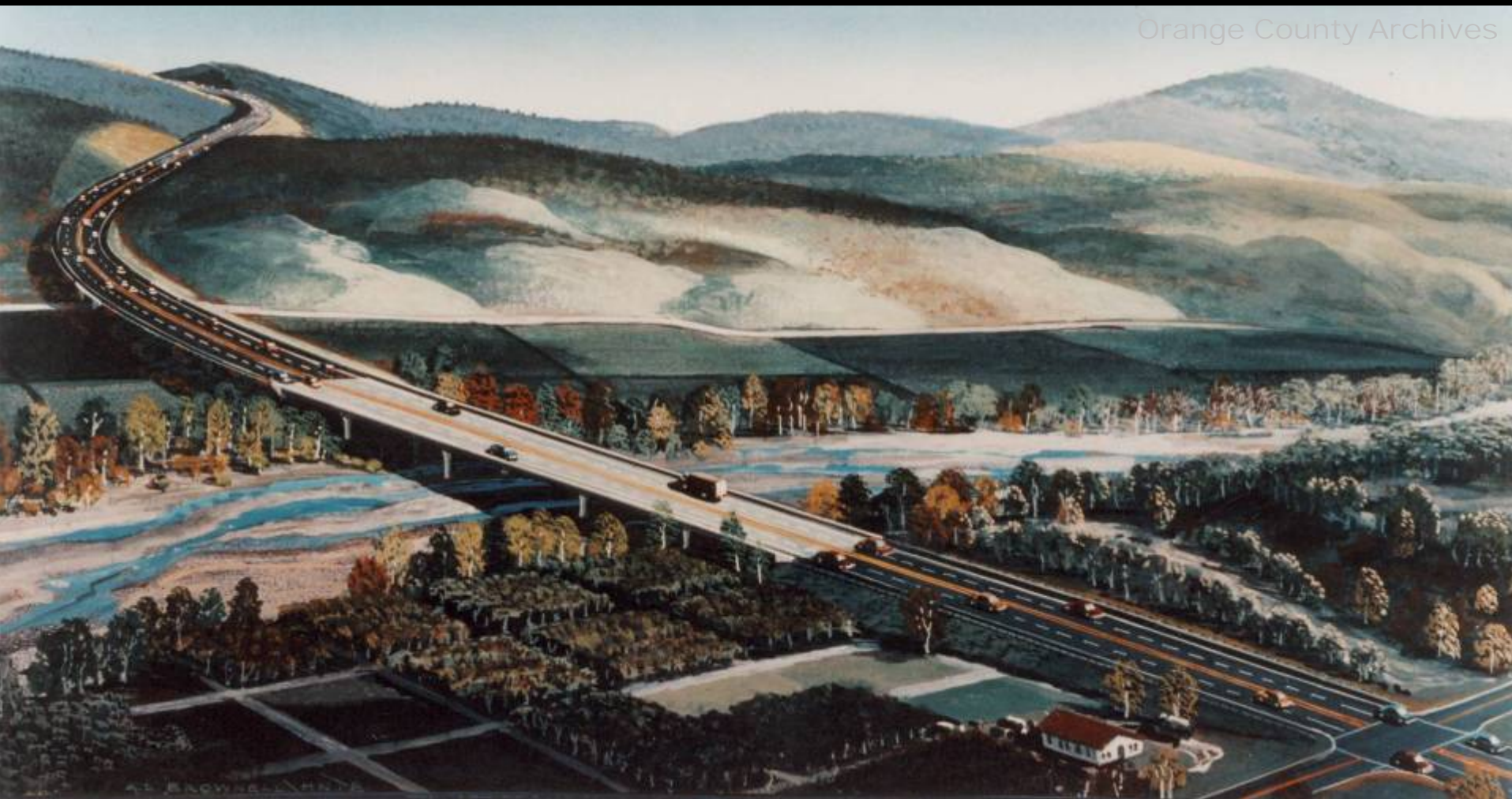
Orange County International Raceway, Irvine, 1967



Harvesting sugar beets at Newhope, circa 1910



Helena Modjeska at Arden, circa 1902



Antonio Parkway bridge rendering, Rancho Santa Margarita, 1999

Mountain View School, Villa Park, 1890s





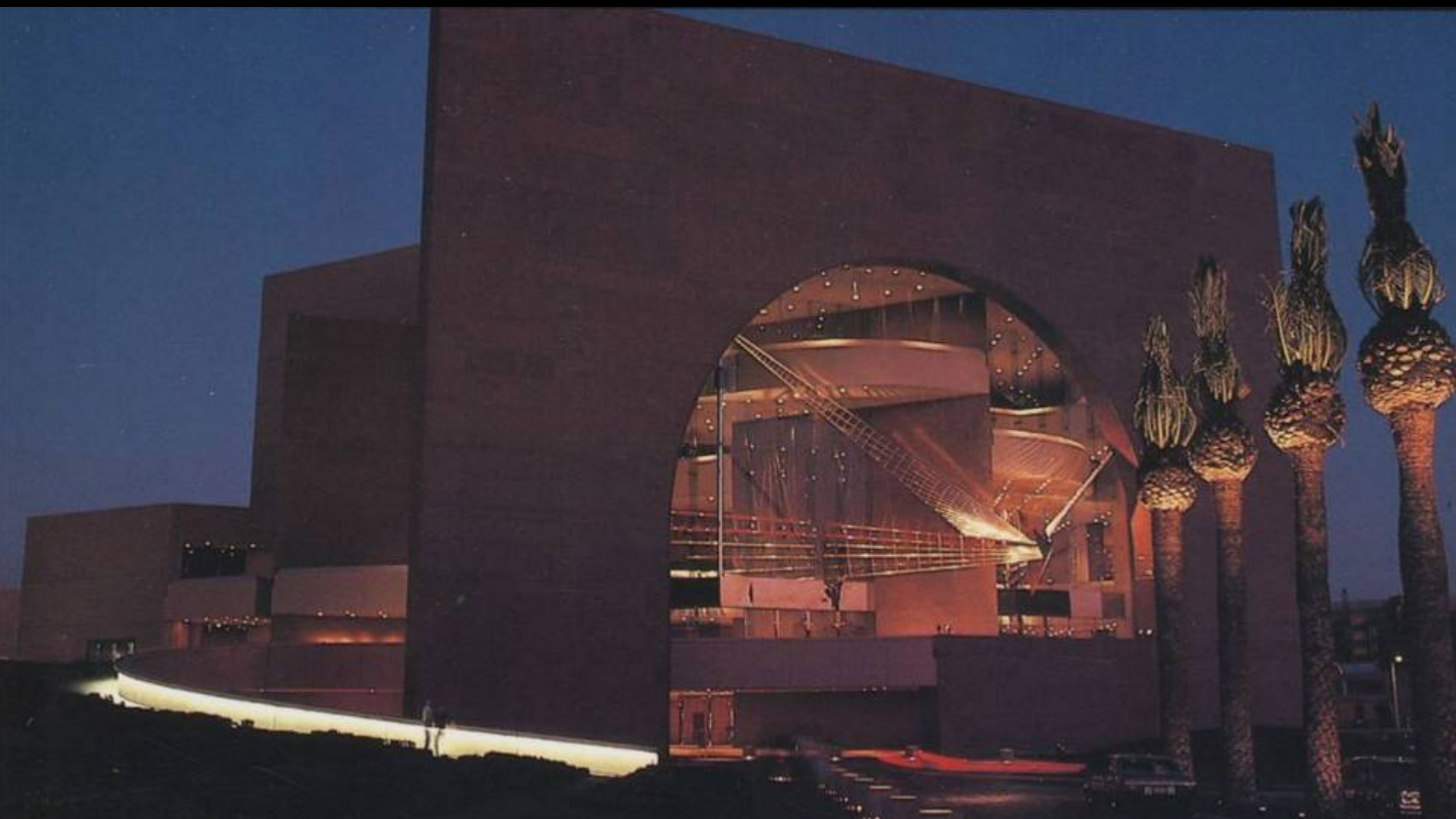
Nixon at MCAS El Toro, hours after resigning, 1974



Orange County Park (now Irvine Park), circa 1910s



Los Angeles Street, Anaheim, California.

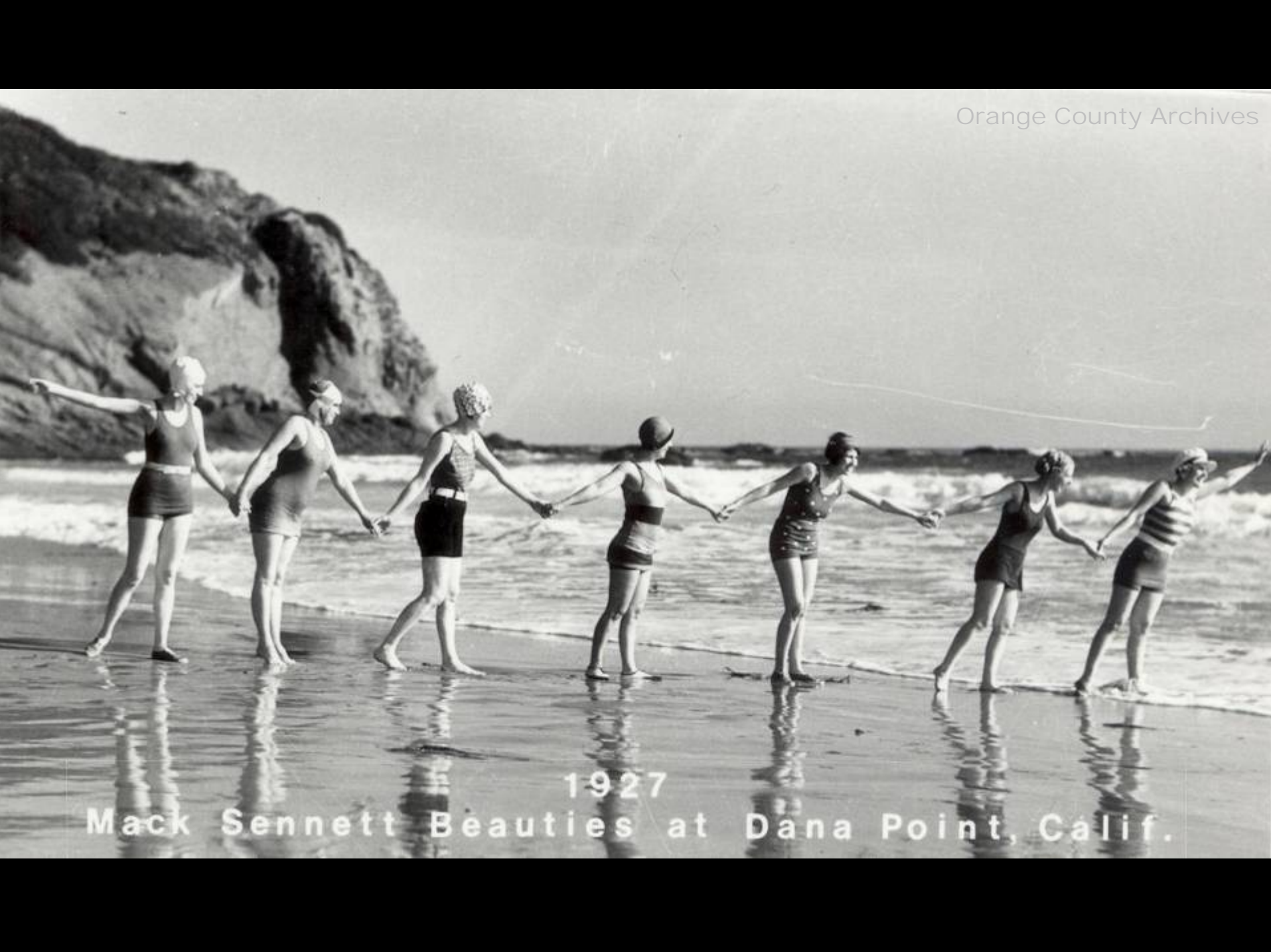


Orange County Center for the Performing Arts, 1986



Orange County Archives

PCH at Main St., Huntington Beach, circa 1905



1927

Mack Sennett Beauties at Dana Point, Calif.



LAGUNA BEACH, CALIF.

Laguna Beach, 1920s



*Orange County Airport
Southern California*

Orange County Airport (now John Wayne Airport), circa 1970



Downtown Tustin, 1925



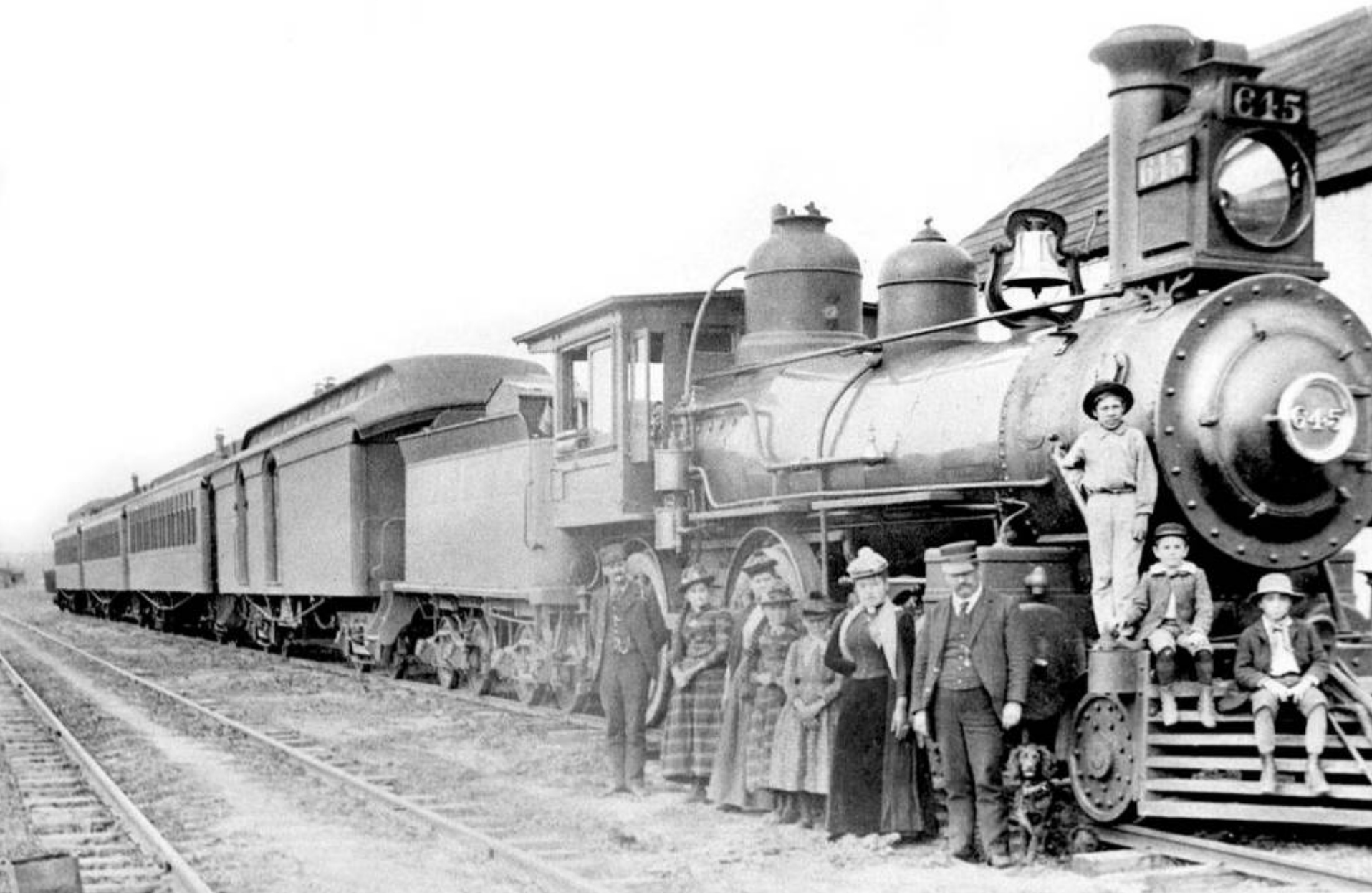
“Ziggurat” and Sulphur Creek Reservoir, Laguna Niguel, circa 1980s

Railroad crew, Huntington Beach, circa 1904



HUNTINGTON BEACH, CAL.

Santa Fe Railroad in Orange County, circa 1890



Walter & Cordelia Knott at their berry stand, 1960s



Stanton, 1913





Orange County Archives

Westminster, circa 1910

Alpha Beta Market, Laguna Hills, 1966





Yorba Linda Citrus Packing House, 1949

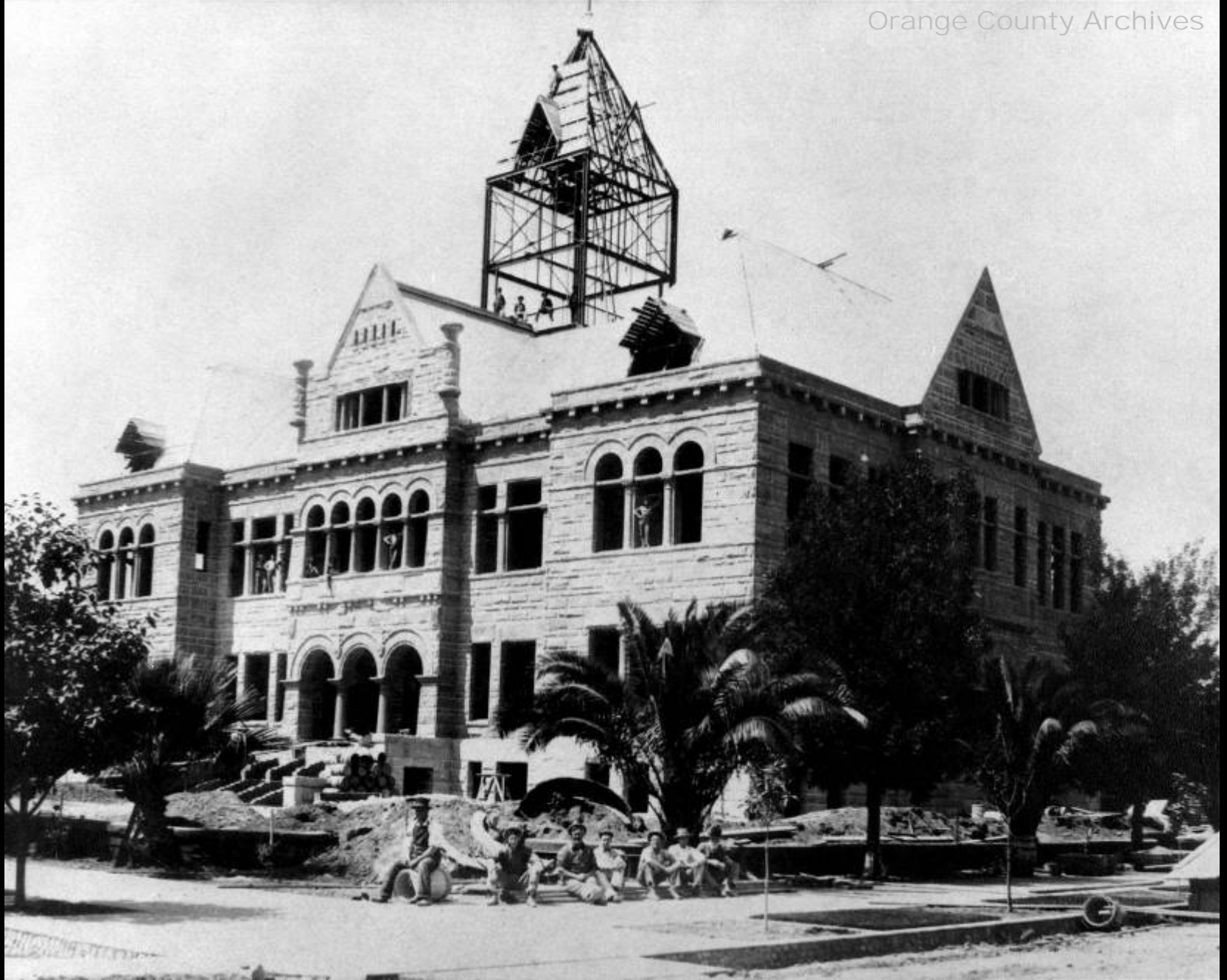


Midway City Volunteer Fire Department, circa 1936

ORANGE COUNTY



I-5 Freeway, Buena Park, 2010



Orange County Courthouse, under construction, 1901